

Apply Small Labels Accurately – Automatically!

Our customers requested a print-and-apply label applicator for small, hard-to-place labels. They wanted to be able to use it in a vertical or horizontal mode depending on their application. They wanted to be sure of consistent label placement and repeatability. We developed the LAP4110 ensuring all of the above and more.

Benefits

- Outstanding bar code resolution
- Clear graphics on even the smallest of labels
- Easy integration
- Remote access
- Remote monitoring

Features

- Zero-queue fixed position label applicator
- Zebra printer offers 300 or 600 dpi
- Labels placed consistently and accurately every two seconds
- Operator notified of mis-feeds by automatic vacuum sensor.
- Uses tamp-on action to ensure complete and consistent adhesion to item
- Capable of placing labels with an accuracy of +/- 0.4 mm (0.015").
- Can be mounted for vertical, horizontal, or bottom-up label application.
- Custom fixturing available:
 - custom item-locating fixtures to ensure consistent label placement and repeatability
 - work cell integration with conveyor systems
 - scanners
 - verification systems



Vertical Position



Horizontal Position

Warranty and Service:

Our LAP4110 was built with long term dependability in mind. Our goal is to keep your production lines up and running with minimal interruptions. We offer a comprehensive one-year parts and labor warranty. Extended warranty and service programs are available.

Training:

Warranty is validated upon completion of required customer training. Training provided at Computype's St. Paul, MN facility or at customer's location.

Specifications

Mechanical

Height: 524 mm (20.63 in)
 Width: 241 mm (9.5 in)
 Length: 660 mm (26.0 in)
 (includes tamper up and cable clearance)

Weight:

Total Assembly 31 k (69 lbs.)
 Applicator only 7.3 k (16 lbs.)

Shipping Dimensions: (cardboard box)

Zebra Printer 585 x 476 x 355 mm (23 x 18.75 x 14 in)
 Applicator 610 x 305 x 204 mm (24 x 12 x 8 in)

Shipping Weight:

Zebra	29k (64 lbs.)
<u>Applicator</u>	<u>10k (22 lbs.)</u>
<i>Total both packages</i>	<i>39.1 k (86 lbs.)</i>

Label Liner Width Maximum:

Xiii Plus series printer 114 mm (4.5 in)

Label Liner Width Minimum:

Xiii Plus series printer 20 mm (0.79 in)

Label Supply Roll Maximum Diameter: 203 mm (8 in)

Label Rewind Core Diameter: No Core Required

Ribbon Roll Maximum Diameter: 81.3 mm (3.2 in)

Ribbon Roll Core ID: 25.4 mm (1.0 in)

Ribbon Rewind Core: None Required

Print Head Resolution: 300 or 600 DPI

Operating Environment:

5 deg C to 41 deg C (40 deg F to 105 deg F)
 10-90% non-condensing RH

Storage Temperature:

-40 deg C to 71 deg C (-40 deg F to 160 deg F)
 10-90% non-condensing RH

Pneumatic

Supply Port Size: 1/8 NPT FM Thread

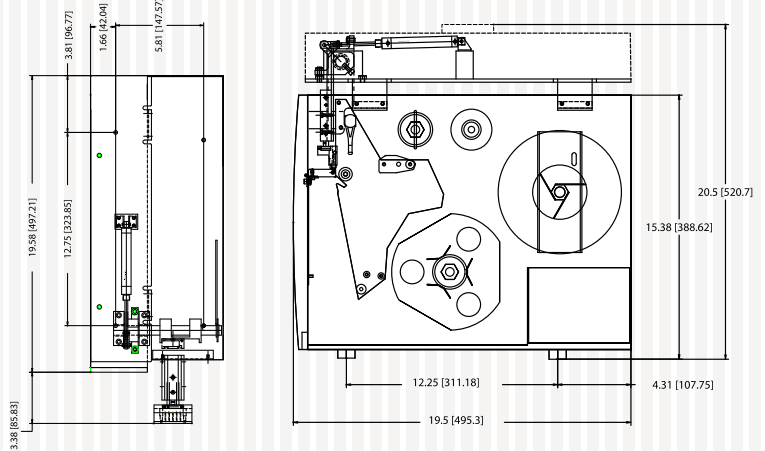
Pressure Requirement: 80 PSI Dry filtered and regulated*

Filter Requirement:* 5 Micron

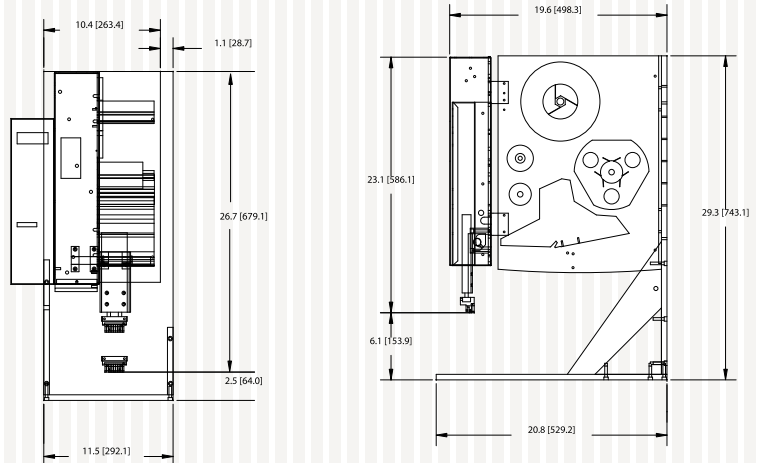
Flow Requirement: 6 SCFM

*Filter and regulator are not supplied as part of the standard base product.
 Please order separately if Computype is to supply this feature.
 The printer does not require compressed air.

LAP4110 Horizontally Mounted



LAP4110 Vertically Mounted



Computype[®]
 You can count on it.™

COMPUTYPE USA:
 2285 WEST COUNTY RD C • ST. PAUL, MINNESOTA 55113-2567 • 800-328-0852 • T 651-633-0633 • F 651-633-7122 • WWW.COMPUTYPE.COM

COMPUTYPE EUROPE:
 OSLO ROAD, SUTTON FIELDS INDUSTRIAL ESTATES, HULL, EAST YORKSHIRE HU7 OYN ENGLAND • T (44) 1482-835366 • F (44) 1482-831152
 Copyright © 2008 Computype, Inc. 400-408